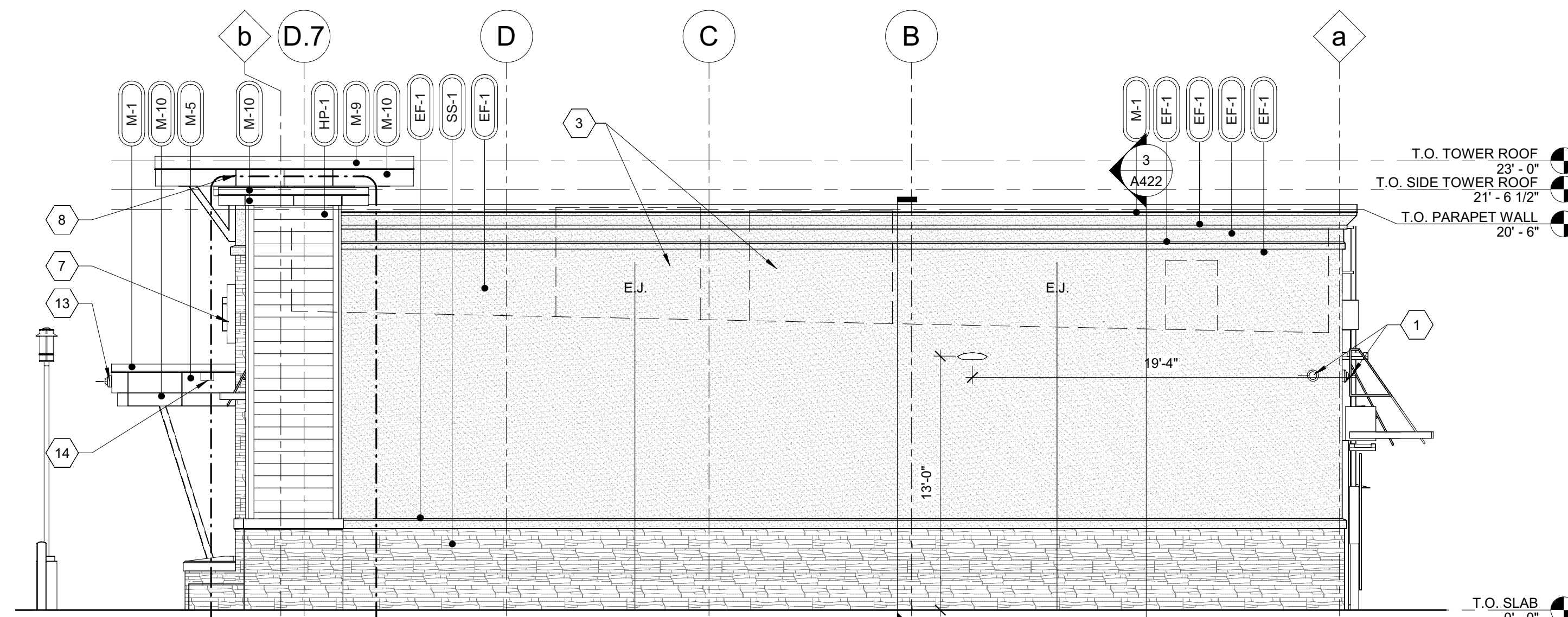
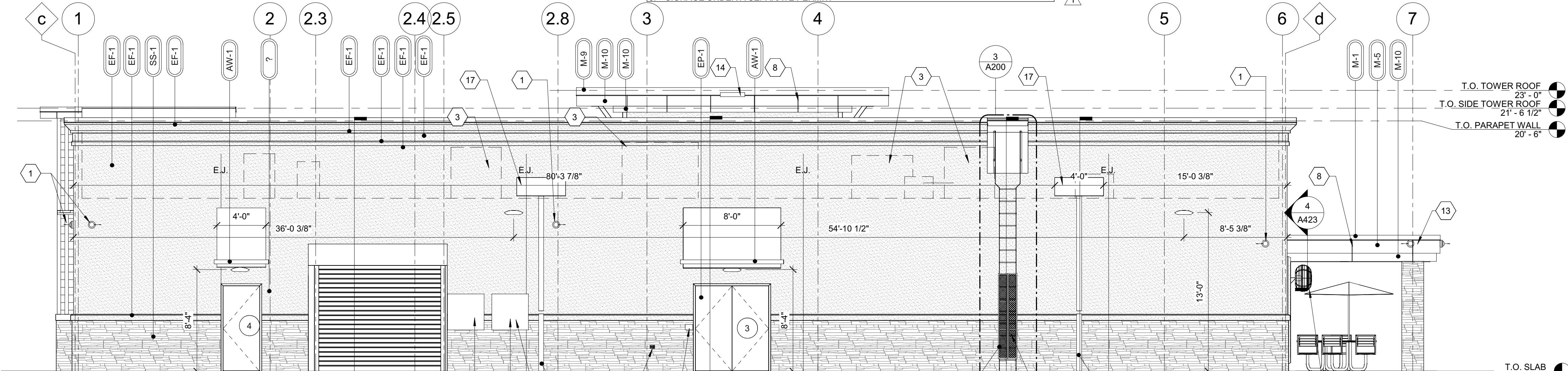


4 LEFT ELEVATION
3/16" = 1'-0"

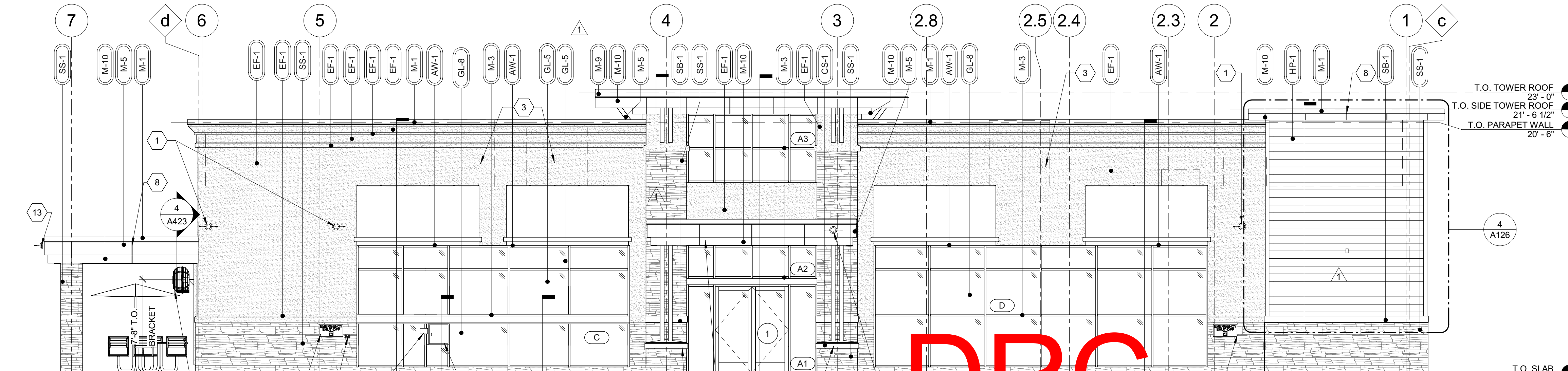


3 RIGHT ELEVATION
3/16" = 1'-0"

- GENERAL NOTES**
1. CONTRACTOR SHALL VERIFY ALL EXTERIOR MATERIAL COLOR AND FINISHES WITH THE ARCHITECT. ANY DISCREPANCIES NOTED SHALL BE BROUGHT TO THE ATTENTION OF THE ARCHITECT FOR CLARIFICATION.
 2. PROVIDE EXPANSION JOINTS (EJ) AT ALL LOCATIONS WHERE EIFS ABUTS A DISSIMILAR MATERIAL OR WHERE OTHERWISE REQUIRED BY MANUFACTURER.
 3. PROVIDE EXPANSION JOINTS (EJ) AS LOCATED ON EXTERIOR ELEVATION. SPECIFICATION FOR JOINT SEALANT SHALL BE 'LIGHT BRONZE' SL-2 BY TREMCO.
 4. MAXIMUM SPACING OF EXPANSION JOINTS SHALL BE 15'-0" O.C. OR PER MANUFACTURER RECOMMENDATION.
 5. REFER TO LIGHTING PLANS FOR LIGHTING FIXTURE LOCATION AND SCHEDULE.
 6. REFER TO STRUCTURAL DRAWINGS FOR JOIST AND BEAM BEARING AND FOUNDATIONS.
 7. REFER TO REFLECTED CEILING PLANS FOR COMPLETE DIMENSIONS OF ACM JOINT LOCATIONS.
 8. SIGNAGE UNDER A SEPARATE PERMIT.



2 REAR ELEVATION
3/16" = 1'-0"



1 FRONT ELEVATION
3/16" = 1'-0"

ELEVATION KEYNOTES		
1	WALL MOUNTED SECURITY CAMERA	
2	NOT USED	
3	MECHANICAL EQUIPMENT BEYOND	
4	REFER TO DETAILS ON SHEET A431 FOR CAST STONE SHAPE	
5	HOSE BIB; REFER TO PLUMBING DRAWINGS	
6	PATIO FAN; REFER TO SPECIFICATIONS	
7	NOT USED	
8	ACM PANEL REVEAL LINE. REFER TO REFLECTED CEILING PLAN FOR DIMENSIONS	
9	INTERCOM AND SPEAKER	
10	EMERGENCY FUEL SHUT OFF SWITCH. MOUNT TOP OF SIGN AT 48" A.F.F.	
11	LOCATION OF ELECTRICAL SERVICE C/T AND METER	
12	GENERATOR TAP BOX - SEE ELECTRICAL FOR LOCATION	
13	SECURITY CAMERA MOUNTED TO FASCIA	
14	OVERFLOW SPILL SCUPPER	
15	PACKAGE PASSER. REFER TO EQUIPMENT PLAN	
16	PROVIDE METAL GUARD GATE AT LADDER TO 8'-0" A.F.F. WITH LOCKING HASP	
17	4'-0" WIDE X 1'-7" HIGH SCUPPER. REFER TO DETAILS 9 & 10 ON SHEET A201	

EXTERIOR MATERIAL SCHEDULE		
AWNING	ALUMINUM AWNING	SELECTED BY RACETRAC
AW-1		
CAST STONE		
CS-1	CONTINENTAL CAST STONE OR APPROVED OTHER	MATCH BORAL TUSCAN LITTEL CHAMPAGNE
		COLOR 1102 NATURAL STONE; MORTAR COLOR 'LIGHT BUFF'. SEAL WITH (SL-5) SEALANT.
CEMENT BOARD		
HP-1	JAMES HARDIE	ARTISAN V-GROOVE SIDING
		PAINT SHERWIN WILLIAMS SEALSIN #7675. BLIND FASTEN AND STAGGER PLANKS PER MANUFACTURERS RECOMMENDATION

EIFS	STO	STO THERM CI	*FINE FINISH* APPLICATION; COLOR TO MATCH SW #6141 "SOFTER TAN"
GLAZING			
GL-5	1-5/16" IMPACT RATED INSULATED LAMINATED GLAZING	CLIMATE ZONES 1 OR 2: IGU 0.28 U-FACTOR, SHGC PF>0.25+0.27 (1/4" CLEAR TEMPERED 70XL LOW-E #2 + 1/2" AIR + 1/4" CLEAR + 0.90 SG + 1/4" CLEAR) OR APPROVED ALTERNATE. SEE A600	
GL-7	1-5/16" IMPACT RATED ACID ETCHED INSULATED GLAZING	CLIMATE ZONES 1 OR 2: IGU 0.28 U-FACTOR, SHGC PF>0.25+0.27 (1/4" CLEAR TEMPERED 70XL LOW-E #2 + 1/2" AIR + 1/4" CLEAR SATIN ETCHED #3 + 0.90 SG + 1/4" CLEAR) OR APPROVED ALTERNATE. SEE A600	
GL-8	1-5/16" IMPACT RATED ACID ETCHED INSULATED GLAZING W/ OPAQUE FILM	CLIMATE ZONES 1 OR 2: IGU 0.28 U-FACTOR, SHGC PF>0.25+0.27 (1/4" CLEAR TEMPERED 70XL LOW-E #2 + 1/2" AIR + 1/4" CLEAR SATIN ETCHED #3 + 0.90 SG + 1/4" CLEAR) OR APPROVED ALTERNATE. SEE A600	

METAL			
M-1	PREFINISHED 4" 2-PIECE COMPRESSION METAL COVER	METAL TO MATCH STOREFRONT COLOR DARK BRONZE	
M-2	COLOR DARK BRONZE.	METAL TO MATCH STOREFRONT COLOR DARK BRONZE	
M-3	VISTAWALL (OR APPROVED ALTERNATE)	FG-5750T IMPACT RESISTANCE STOREFRONT SYSTEM (OR APPROVED ALTERNATE)	2022.06.10:18:00
M-5	ALCOA	REYNOLBOND PE	COLORWELD 500 "CLASSIC BRONZE"
M-7	VERSATEX	WP4 TONGUE AND GROOVE	PAINT SOFTER TAN
M-9		PREFINISHED 8" 2-PIECE COMPRESSION METAL COVER	METAL TO MATCH STOREFRONT COLOR DARK BRONZE
M-10	ALCOA	REYNOLBOND PE	DURAGLOSS 3000 "PROGRAM RED"
PAINT			
EP-1	SHERWIN WILLIAMS	EXTERIOR PAINT TO SW #7020 "BLACK FOX"	
ROOFING			
DURO	DUROLAST	50 MIL MEMBRANE ROOFING SYSTEM	WHITE; MECHANICALLY FASTENED
STACKED STONE			
SS-1	BORAL	ASPEN COUNTRY LEDGESTONE	'WET STACK APPLICATION. MORTAR COLOR 'LIGHT BUFF'
STONE BAND			
SB-1	BORAL	TUSCAN LITTEL CHAMPAGNE	MORTAR CO R 'LIGHT BUFF'
TREX			
TX-1	SELECT COMPOSITE	1"X6"	WOODLAND TOWN
WINDOW FILM			
WF-1		WINDOW FILM; 3M PRESTIGE 70 SOLAR FILM	SEE A600 FOR WINDOW FILM LOCATIONS

DRC
PZ22-12000027
10/5/2022

"This file was signed electronically by M. Salopek on the date and/or time stamp shown using a digital signature. Printed copies of this are not considered signed and sealed and the signature must be verified on any electronic copy."

DRC
PZ22-12000027
8/17/2022

RaceTrac
COPYRIGHT NOTICE
THESE PLANS ARE SUBJECT TO FEDERAL
COPYRIGHT LAWS: ANY USE OF SAME
WITHOUT THE EXPRESSED WRITTEN
PERMISSION OF RACETRAC PETROLEUM,
INC. IS PROHIBITED. 2016 RACETRAC
PETROLEUM INC.

DESIGN PROFESSIONALS

Mark S. Salopek, LLC

3638 WEST GALLOWAY DR
RICHFIELD, OH 44286

ISSUE/REVISION RECORD	
DATE	DESCRIPTION
03/05/21	PERMIT SET
04/23/21	REV1-AHJ COMMENTS
06/16/21	REV2-AHJ COMMENTS
12/15/21	REV3-AHJ COMMENTS

RaceTrac
RACETRAC PETROLEUM, INC.
200 GALLERIA PARKWAY SOUTHEAST
SUITE 900
ATLANTA, GEORGIA 30339
(770) 431-7600

PROJECT NAME

SAMPLE & 27TH

**POMPAN0 BEACH
FL 33069
2900 W. SAMPLE ROAD**

RACETRAC STORE NUMBER

#1360

**PROTOTYPE SERIES 5.5K 2.0
2020 LH MO 0305**

PLAN MODIFICATION NOTICE

SPB NO. 0305 DATE 11/30/20

STANDARD PLAN BULLETINS (SPB) MODIFY THE
PROTOTYPE SERIES SET NOTED ABOVE. THE
LISTED SPB REPRESENTS THE LATEST
MODIFICATION INCORPORATED TO THIS
PROTOTYPE SERIES SET AT ORIGINAL RELEASE.
THE ISSUE/REVISION RECORD COLUMN ABOVE
LISTS ANY REVISIONS OR SPB INCORPORATED IN
THIS SET AFTER THE ORIGINAL RELEASE.
CONTACT RACETRAC ENGINEERING AND
CONSTRUCTION FOR ANY SUBSEQUENT
BULLETINS NOT INCORPORATED HEREIN.

Mark S. Salopek
Professional Seal
Date: 2022.06.10:18:00
A91472

PROJECT NUMBER 06/20/22
2019157.21

SHEET TITLE

**EXTERIOR
ELEVATIONS**

SHEET NUMBER

A300